

Blue Coat SG510 Series



As an integral part of Blue Coat's ControlPoint™ Architecture, Blue Coat SG appliances establish points of control to secure Web communications and accelerate business applications for users across the distributed enterprise. Key benefits include:

- **Security** – Blue Coat's Web security architecture addresses a wide range of requirements, including filtering web content, preventing spyware and other malicious mobile code, scanning for viruses, inspecting encrypted SSL traffic, and controlling IM, VoIP, P2P, and streaming traffic.
- **Performance** – Blue Coat's patented MACH⁵ acceleration technology combines five different capabilities to optimize performance and delivery of critical applications (regardless of whether they're hosted internally or externally) to all users across the distributed enterprise.
- **Control** – Blue Coat's patented Policy Processing Engine empowers IT to make intelligent decisions using a wide range of attributes to effectively align user-application security and performance policies with corporate priorities and goals.

The Blue Coat SG510 Series provides small enterprises and remote offices a 1U rack mount proxy appliance with secure remote administration features. The 510 series is purpose-built, providing flexible control with high-end performance with up to 2GB of memory and 600GB of disk capacity. Utilizing a custom, object-based OS with integrated caching for performance, organizations can advise, coach, enforce granular policies down to individual users.

Blue Coat SG Solutions:

Web Proxy

High-performance, scalable replacement for upgrading existing proxy servers. Supports the following protocols:

- HTTP
- SSL (forward and reverse)
- FTP
- Telnet
- SOCKS
- P2P
- AOL IM
- Yahoo IM
- Microsoft IM
- MMS & RTSP
- QuickTime
- TCP-Tunnel

Content Filtering

Integrated URL filtering gives IT staff control over access to inappropriate Web content – even when it is SSL-encrypted. Support for major filtering vendors and custom categories with unmatched speed.

Instant Messaging Control

Method-level controls to manage and log all popular public IM formats including AOL, MSN and Yahoo!

Web Virus Scanning

Integration with Blue Coat AV with a choice of virus engines allows scalable, real-time virus scanning of Web content – even when it's SSL-encrypted.

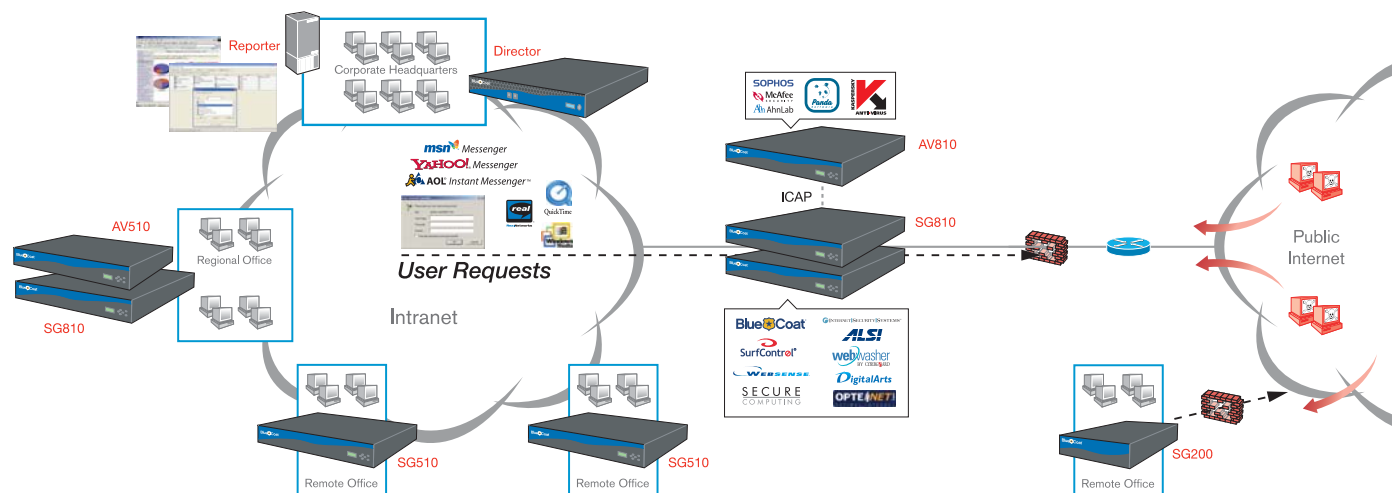
Content Security

Keep Malicious Mobile Code off the network, control peer-to-peer (Kazaa, Morpheus, etc.) traffic, and manage Web email traffic – even when it's SSL-encrypted.

And More...

See Blue Coat TechBriefs for additional Blue Coat SG application and control solutions:

www.bluecoat.com/resources



The Blue Coat SG510 is ideal for remote locations to inspect, control, and log Web application traffic entering or leaving the network.

Performance and Reliability — SGOS

The purpose-built Blue Coat SG appliance provides flexible control with wire-speed performance allowing a company to advise, coach and enforce granular policies down to individual users. Key SGOS and platform highlights include:

Secure object-based operating system with small footprint

High-speed Web caching with advanced object pipelining and adaptive refresh

Compression services, bandwidth management, plus optional SSL services and optional pass-through network card

Network functionality including:

- Active/Active bridging support using virtual IP addressing for failover and remote installations

- Routing configurations for gateway, route tables, RIP, DNS, and WCCP
- Health checks performed on a forwarding host or external servers to verify status and availability of device
- Configurable Time Services (UTC, NTP)
- 19" Rack mountable (with kit) or portable use

Integrated support services

- View & submit service requests via the Blue Coat management interface
- Send snapshots (trace files) to Blue Coat Support Services for faster resolution

Manageability — Policy Processing Engine

The patent-pending Policy Processing Engine enables sophisticated security triggers based on individual users, groups of users, time of day, location, protocol, hostname user agent, content type and other attributes to initiate policy actions. These comprehensive capabilities include:

Powerful management interface

- Web-based management interface
- Optional command line interface
- SSH v2 and SSL/TLS administration
- Alerting via SNMP, SMTP and logging administrative events

Comprehensive policy definitions

- Three policy files with settable evaluation order
- Graphical Visual Policy Manager with layered policy definitions
- Definable triggers and actions for policy definition

Content Policy Language (CPL)

- Create custom text-based policies to address unique policy requirements

- Built-in text editor for CPL allows sample code to be copied and pasted from Blue Coat TechBriefs or Support Services advisories

Authentication

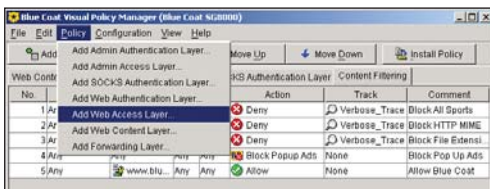
- Utilize a company's existing authentication source including local password files, NTLM, LDAP (Active Directory, eDirectory, SunOne), CA eTrust SiteMinder, Microsoft Kerberos, Oracle Access Manager, RADIUS and certificates
- Multi-realm authentication sequencing
- Forms-based authentication support

Extended Management with Director

- Distribute, backup, restore policy files for multiple Blue Coat SG appliances
- Manage policies by device, group, or region
- Job scheduling/job status reporting

Control — Proxy Services

The Blue Coat SG provides a layered policy approach allowing companies to balance their Web communication needs with current business and Internet risks. The Blue Coat SG provides unmatched flexibility and scalability.



The Blue Coat Visual Policy Manager enables administrators to easily implement simple or complex Internet use policies.

Proxy support for multiple protocols

- HTTP, SSL, FTP, Telnet, SOCKS, P2P, AOL IM, Yahoo IM, Microsoft IM, MMS, RTSP, QuickTime, TCP-Tunnel, DNS, CIFS, MAPI
- Compression services (HTTP + TCP)
- Bandwidth management on all proxy services

Content Filtering

- On-proxy support of leading URL lists, popular regional lists, custom lists, or custom categories
- Performance gains through integrated caching

Content Security

- Block active content
- Strip and replace Web content

P2P file sharing controls

- Log and block P2P traffic
- Control BitTorrent, eDonkey, Gnutella, and FastTrack

Web virus scanning

- Blue Coat AV integration with Blue Coat SG
- Unmatched scalability and performance
- Choice of anti-virus engines

IM Logging and Controls

- MSN, Yahoo!, AOL Messengers
- Method level control settings
- IM reflection for privacy

Spyware Prevention and control

- Block spyware while allowing legitimate applications, plus page views
- Control pop-ups and phishing scams

Streaming controls

- MS, Real, QuickTime
- Stream splitting & caching

SSL Termination & Proxy (forward and reverse)

- Application front-ending (e.g. MS OWA, CRM/Siebel, Lotus Notes), with optional SSL off-loading
- Application acceleration to remote offices
- Extend all controls (content, user, application, etc) to encrypted traffic for all users and applications - both inside and outside the enterprise

Visibility — Management Reporting

Visibility is the key to managing employee Web communications in the enterprise. Blue Coat provides the tools needed to log and track user interactions over the Internet and across corporate boundaries.

Default logging

- HTTP, HTTPS, FTP, Telnet, SOCKS, P2P, TCP-Tunnel, ICP, IM, Windows Media, Real Media, QuickTime, DNS
- Global log file limits and upload sizing
- Client upload settings and scheduling

Custom logging and trace files

- Selectable fields/text/log formats

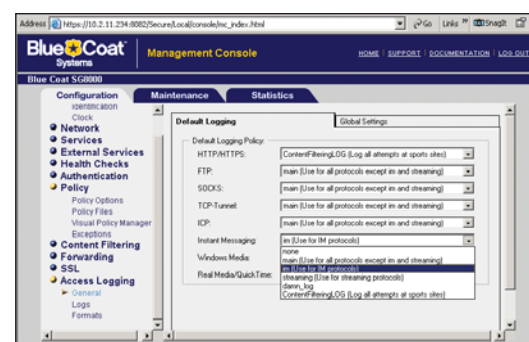
Secure log transport off box

SNMP Support

- Trap settings, community strings

Statistics

- System usage
- HTTP/HTTPS/FTP history
- IM data
- Streaming history
- Resources
- Efficiency
- SOCKS client, connections, bytes



Logging can be enabled for multiple protocols with standard or custom log formats.

Aggregate Blue Coat SG logs with Reporter

- Reporter Dashboard™ - intuitive console that provides a “drill-able” overview of web activity
- 150+ pre-defined reports track user activity, security risks, and web traffic performance
- Secure browser access/role-based viewing
- Provides real-time reporting with continuous log uploads from one or more Blue Coat SGs

Blue Coat Support Services

Blue Coat supports its products with an outstanding customer support program. All Blue Coat products come with a 90-day software and one-year hardware warranty. Support services include a WebPower password enabling access to the following:

- Online access to open technical support cases, review open cases, and add comments to existing cases
- Exclusive support documentation, installation notes, and FAQs
- Blue Coat Instant Support provides an online self-service portal for your technical needs, and our online TechBriefs review popular protocol and application solutions for a quick start on common configurations with Blue Coat SG.

Platinum Service: 24X7 Technical phone support, Advance hardware replacement*, software updates

* Hardware will be shipped same day when RMA Requests are received during regular business hours and deemed necessary by Technical Support before the RMA cut off time.

Blue Coat Training

Blue Coat provides educational services and technical training (basic to advanced) by certified and experienced Blue Coat SG trainers enabling administrators to become fully proficient on all aspects of the Blue Coat SG appliance. All courses are replete with real world examples and feature extensive hands-on lab exercises.

Each student will learn to install, configure and troubleshoot all features and functions of the . Please refer to the following Web link for training times, locations and cost:

www.bluecoat.com/resources/training

Blue Coat channel sales partners are also certified on Blue Coat SG to provide field services. Our partners attend Instructor-led courses as well as monthly online training on the latest Blue Coat SG features and solutions. Look for and ask about Blue Coat certifications.

Configuration & Specification Chart

	Model SG510-A	Model SG510-B	Model SG510-C	Model SG510-D
System				
Disk drives	1x80GB SATA	1x300GB SATA	2x80GB SATA	2x300GB SATA
RAM	1GB RAM	1GB RAM	2GB RAM	2GB RAM
Network Interface	(2) integrated (on board) 10/100/1000 Base-T NICs Optional 2x10/100/1000Base-T card (dual GigE with passthru) or 2x10/100/1000Base-SX (dual gigE Fibre) card. Optional SSL card			
Operating Environment				
Power	AC power 100-240V, 50-60Hz, 6.3-3.0A			
Temperature	5°C to 35°C (41°F to 95°F)			
Humidity	Less than 90% relative humidity, non-condensing			
Altitude	Up to 3048m (10,000ft)			
Dimensions and Weight				
Enclosure	19" Rack-mountable			
Dimensions (L x W x H)	58 cm x 44 cm x 4.4 cm (22.8 in x 17.4 in x 1.7 in)			
Weight (maximum)	12.3 kg (27 lb)	12.3 kg (27lb)	12.7 kg (28 lb)	12.7 kg (28 lb)
Regulations				
Emissions	FCC Class A, EN55022 Class A, VCCI Class A No.1706609, BSMI, CCC, C-tick			
Safety	CSA C22.2 No. 950 M95, UL 60950 3rd Edition, EN60950, TUV-GS, TUV-S, CCC, BSMI			
Standards	UL/CSA, TUV-S, BSMI, Ctick, CCC, CE			
Support Standard warranty	90-day software & phone support with 1-year hardware support; extended and upgraded support plans available			

